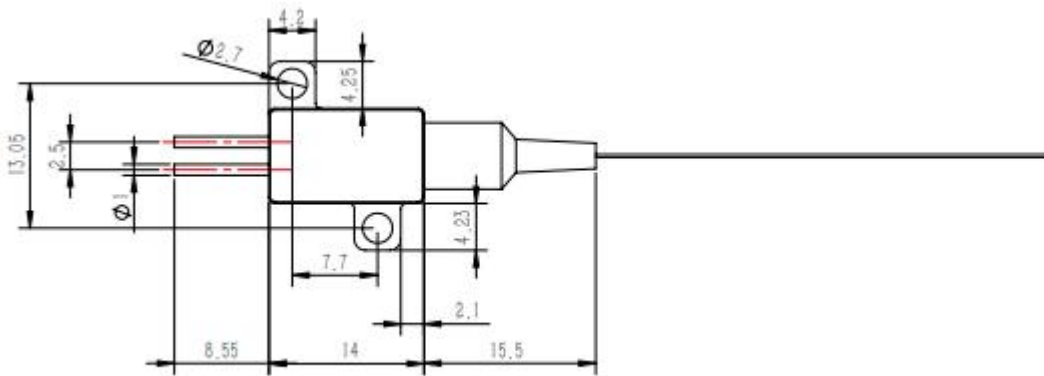
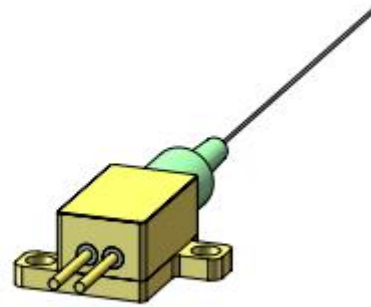
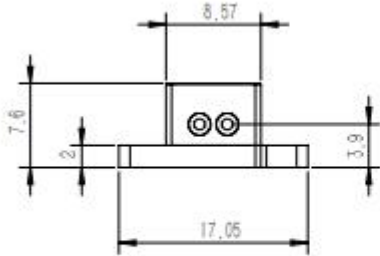


940nm/10W Multi-Mode Pigtailed Laser

Dimensions



Features:

- High output power
- Excellent beam quality
- High reliability

Applications:

- Laser display
- Laser engraving
- Laser illumination

940nm/10W Multi-Mode Pigtailed Laser

Specifications

Parameters	Min.	Typical	Max.	Test Conditions
Optical Properties				
Center Wavelength	935nm	940nm	945nm	At $P_o = 10W$ & $T_{case} = 25^{\circ}C$
Output Power (Pop)		10W	12W	At $T_{case} = 25^{\circ}C$, $I_{op} = 12A$
Operating Temperature (Tcase)	-10°C	25°C	45°C	Using a base with good heat dissipation.
Electrical Properties				
Threshold Current (Ith)		1		
Operating Current (Iop)		13A	15A	At $P_o = 10W$ & $T_{case} = 25^{\circ}C$
Operating Voltage (Vop)		2.1 V	2.6V	At $P_o = 10W$ & $T_{case} = 25^{\circ}C$
Reverse Breakdown Voltage (VR)		0.8V		
Fiber Type				
Numerical Aperture (NA)		0.22		
Fiber Model	220/220			Customizable
Fiber Length	>1.0 m			Customizable
Ferrule Specifications	0.9 black loose tube			Customizable
Output Connector	Bare fiber or FC/APC			Customizable
Storage Conditions				
Storage Humidity	5% ~ 85% RH			No condensation
Storage Temperature	-20 ~ 60°C			No condensation